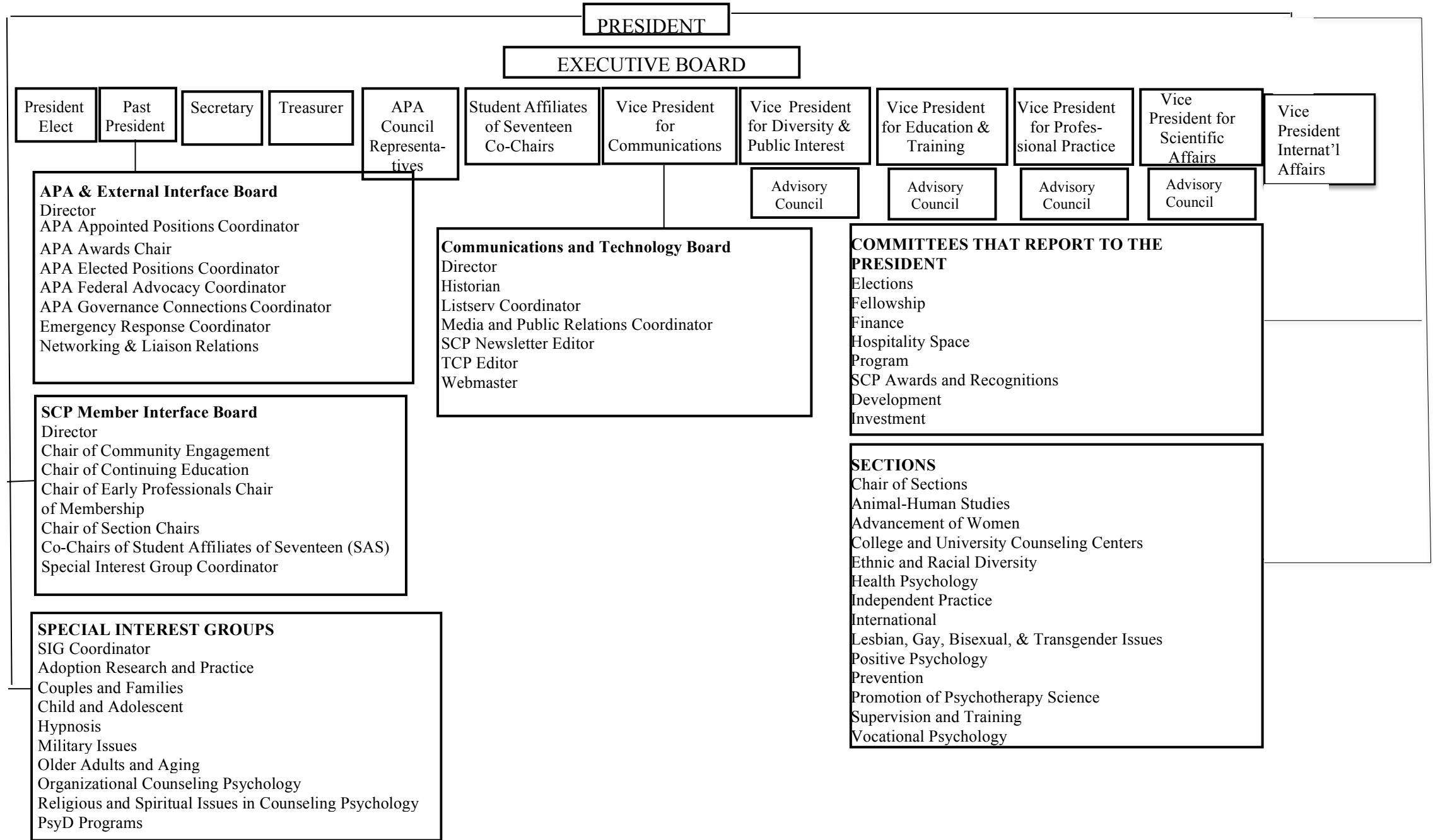


**Society of Counseling Psychology, Division 17 of the American Psychological Association  
Organization Chart**



\*Incoming

# Society of Counseling Psychology, Division 17 of the American Psychological Association 2016/2017 Organization Chart

**PRESIDENT** Martin Heesacker

## EXECUTIVE BOARD

**Pres Elect**  
Arpana  
Inman

**Past Pres**  
James  
Lichtenberg

**Secretary**  
Suzanne  
Lease

**Treasurer**  
Susan  
Kashubeck  
- West

**APA Council  
Reps**  
Y. Barry  
Chung,  
Robertta Nutt,  
Candice  
Crowell

**SAS  
Co-Chairs**  
Wendy  
Gonzalez –  
Canal, Brandon  
Millspaugh

**VP for  
Communications**  
Louise Douce

**VP for Diversity  
& Public Interest**  
Anneliese Singh

**VP for Education  
& Training**  
Michael Scheel

**VP for  
Professional  
Practice**  
Sherry Benton

**VP for Scientific  
Affairs**  
Rachel Navarro

**VP for  
Internat'l  
Affairs**  
Ayse Ciftci

## APA & EXTERNAL INTERFACE BOARD

**Director** Lisa Flores  
**APA Appointed Positions Coordinator** Le Ondra Clark  
**APA Awards Chair** Jessica Martin  
**APA Elected Positions Coordinator** Louise Douce  
**APA Federal Advocacy Coordinator** Paul Perrin  
**APA Governance Connections Coordinator** Johanna Nilsson  
**Emergency Response Coordinator** David Romano  
**Networking & Liaison Relations Coordinator** Laura Hayden

## COMMUNICATIONS AND TECHNOLOGY BOARD

**Director** Bryana French  
**Historian** TBD  
**Listserv Coordinator** Jasmin Llamas  
**Media and Public Relations Coordinator** Danice Brown & Brtiney Brinkman  
**SCP Newsletter Editor** D.C. Wang  
**TCP Editor** Lydia Buki  
**Webmaster** Joseph Hammer

## SECTIONS

**Chair of Section Chairs** Marcy Rowland  
**Advancement of Women** Laurel Watson  
**Animal-Human Interaction:** Lori Kogan  
**College and University Counseling Centers** Jason Hacker  
**Ethnic and Racial Diversity** Delishia Pittman  
**Health Psychology** Mary Ann Hoffman  
**Independent Practice** Mary O'Leary Wiley  
**International** Zhi-Jin Hou & Jinhee Kang  
**Lesbian, Gay, Bisexual, & Transgender Issues** Dustin Shepler  
**Positive Psychology** Rhea Owens  
**Prevention** Dorothy Espelage  
**Promotion of Psychotherapy Science** Margit Berman  
**Supervision and Training** Heidi Zetzer  
**Vocational Psych** Patrick Rottinghaus

## SPECIAL INTEREST GROUPS

**Special Interest Groups (SIG) Coordinator** Christopher Slaten  
**Adoption Research and Practice**  
Oh Myo Kim & Kimberly Langrehr  
**Couples and Families** Nancy Murdock  
**Child and Adolescent** Christopher Slaten & Meg Foley Nicpon  
**Hypnosis** Daniel Fasko  
**Military Issues** Wendy Rasmussen  
**Older Adults and Aging** Renee Zuccherro  
**Organizational Counseling Psychology** Patrick Sherry, Michael Robert Durr II  
**Religious & Spiritual Issues in Counseling Psych.** Christine Agaibi  
**PsyD Programs** Sally Hage & Salina Renninger

## COMMITTEES THAT REPORT TO THE PRESIDENT

**Development Co-Chairs** Patrick Rottinghaus & Erin Hardin  
**Elections** Jim Lichtenberg  
**Fellows** Toti Perez  
**Finance** Susan Kashubeck - West  
**Hospitality Suite** Melanie Lantz  
**Program** Mary Ann Covey  
**SCP Awards & Recognition** Paul Perrin  
**Investment** Bob McPherson

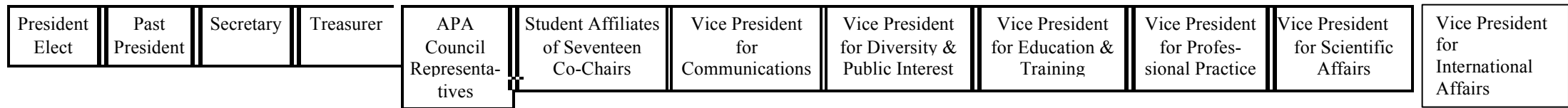
## SCP MEMBER INTERFACE BOARD

**Director** Dominick Scalise  
**Chair of Community Engagement** Clarissa Richardson  
**Chair of Continuing Education** Julie Koch  
**Chair of Early Professionals** Tiffany O'Shaughnessy  
**Chair of Membership** Ashley Randall  
**Chair of Section Chairs** Marcy Rowland  
**Co-Chairs of Student Affiliates of Seventeen (SAS)** Wendy Gonzalez-Canal & Brandon Millspaugh  
**Special Interest Group Chair** Christopher Slaten

**Society of Counseling Psychology, Division 17 of the American Psychological Association  
Organization Chart**

PRESIDENT

EXECUTIVE BOARD



**LIAISONS**

American Academy of Counseling Psychology  
 American Board of Professional Psychology  
 Association of Counseling Center Training Agencies  
 Association of University and College Counseling Center Directors  
 Commission for Counseling and Psychological Services of ACPA  
 Council of Counseling Psychology Training Programs  
 International Association of Applied Psychology, Division 16, Counseling Psychology  
 National Partnership to End Interpersonal Violence across the Lifespan  
 Division 17 Representative to Division 56  
 CIRP

**SPECIAL TASK GROUPS**

Adding an Early Career Professional to SCP's Executive Board  
 Reviewing and Revising the SCP/CCPTP Model Training Program  
 Governance/Leadership Meeting and Travel Support  
 Strategic Planning  
 Ethics  
 Leadership for Mid-Career & Early Career Professionals

**SPECIAL APPOINTMENTS**

SCP Representative to APA Coalition for Psychology in the Schools & Education  
 SCP Representative to Interdivisional Healthcare Committee  
 SCP Representative to 2017 National Multicultural Conference and Summit (NMCS)  
 SCP Representative to 2015 NMCS  
 NMCS Legacy Fund Representative  
 SCP Representative to the Higher Education Mental Health Alliance  
 CP Synarchy Representative to Council of Specialties  
 SCP Rep to CP Synarchy  
 SCP Representative to APA's Committee on Women in Psychology  
 SCP Monitor to CSES

**Society of Counseling Psychology, Division 17 of the American Psychological Association  
2016/2017 Organization Chart**

**PRESIDENT** Marty Heesacker

**EXECUTIVE BOARD**

<b>Pres Elect</b> Arpana Inman	<b>Past Pres</b> Jim Lichten- berg	<b>Secretary</b> Kristen Perrone – McGovern	<b>Treasurer</b> Stephen- Cook	<b>APA Council Reps</b> Y. Barry Chung, Roberta Nutt, Candice Crowell	<b>Student Affiliates of Seventeen (SAS) Co-Chairs</b> Wendy Gonzalez – Canal & Brandon Millsbaugh	<b>VP for Communications</b> Louise Douce	<b>VP for Diversity &amp; Public Interest</b> Anneliese Singh	<b>VP for Education &amp; Training</b> Michael Scheel	<b>VP for Professional Practice</b> Sherry Benton	<b>VP for Scientific Affairs</b> Rachel Navarro	<b>VP for International Affairs</b> Ayse Ciftci
--------------------------------------	---------------------------------------------	------------------------------------------------------	--------------------------------------	------------------------------------------------------------------------------------------	---------------------------------------------------------------------------------------------------------------------	--------------------------------------------------	----------------------------------------------------------------------	--------------------------------------------------------------	-----------------------------------------------------------------	-----------------------------------------------------------	------------------------------------------------------------

**LIAISONS**

**American Academy of Counseling Psychology** Arnold Spokane  
**American Board of Professional Psychology** Mary O’Leary Wiley  
**Association of Counseling Center Training Agencies** Natasha  
 Maynard-Pemba  
**Association of University and College Counseling Directors** Danielle Oakley  
**Commission for Counseling and Psychological Services of ACPA** Meggan  
 Sixby  
**Council of Counseling Psychology Training Programs** Ayse Ciftci  
**International Association of Applied Psychology, Division 16, Counseling Psychology**  
 Paul Hartung  
**National Partnership to End Interpersonal Violence across the Lifespan** Lisa Goodman  
**Division 17 Representative to Division 56** Laura Palmer  
**CIRP** Ayse Ciftci

**SPECIAL TASK GROUPS**

**Adding an Early Career Professional to SCP’s Executive Board** Tiffany  
 O’Shaughnessy  
**Reviewing and Revising the SCP/CCPTP Model Training Program**  
 Michael Scheel & Sally Stabb  
**Governance/Leadership Meeting and Travel Support** Mary O’Leary  
 Wiley  
**Strategic Planning** Rosie Bingham  
**Ethics** Linda Forrest  
**Leadership for Mid-Career & Early Career Professionals** Arpana Inman

**SPECIAL APPOINTMENTS**

**SCP Representative to APA Coalition for Psychology in the  
 Schools and Education** Kimberly Howard  
**SCP Reps to Interdivisional Healthcare Committee** Matthew Bitsko, Annette Kluck  
**SCP Rep to 2017 National Multicultural Conference and Summit** Cisco Sanchez  
**NMCS Legacy Fund Representative** Rosie Phillips Bingham  
**SCP Representative to the Higher Education Mental Health Alliance** Shari Robinson  
**CP Synarchy Representative to Council of Specialties** Y. Barry Chung  
**SCP Rep to CP Synarchy** Martin Heesacker  
**SCP Rep to Committee on Women in Psychology** Corrine Datchi  
**Counseling Psychology Rep to the Clinical Health Psychology Council** Donald Nicholas